



SQ-WB

CURVED WIDE BASE WRAP

PRODUCT
OVERVIEW

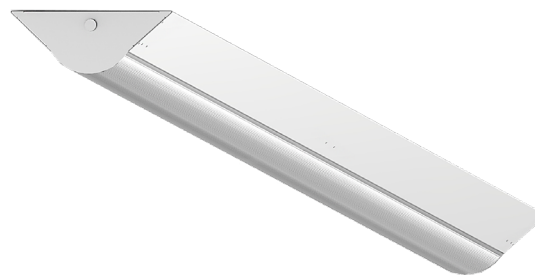


SCAN OR
CLICK HERE

FEATURES

- Available in 4ft and 8ft lengths with ceiling, wall, or suspension mounting options, and suitable for continuous run installations
- Features a curved frosted acrylic lens for impact resistance and a .040" pre-painted white aluminum housing.
- Optional ASLFMB adjustable sliding fixture mounting box provides a pendant-ready retrofit solution for uncertain or inconsistent pendant locations.
- Multiple dimming and sensor options available to manage occupied and unoccupied light levels, including a standard 0-10V dimmable driver (100%-10%).
- Available in 3000K, 3500K, 4000K, or 5000K CCT featuring reliable performance with calculated L70 > 100,000 hours for long-lasting efficiency.
- DLC® qualified and ETL listed for damp locations, backed by a 5-year standard warranty (10-year optional)

DIGITAL NAVIGATION

 Explore the spec sheet through the links below[ORDERING GUIDE](#)[LED SYSTEMS TABLE](#)[OPTIONS](#)[CONTROLS](#)[LINE DRAWINGS](#)[PHOTOMETRIC DATA](#)

SUITABLE APPLICATIONS

- Office
- Hallways
- Hospitals
- Multipurpose
- Education
- Work Station Task Lighting

CERTIFICATIONS



SPECIFICATIONS

CONSTRUCTION

A Sleek .040" aluminum pre-painted white housing body for rigidity, durability, and ease of installation. Designed to achieve maximum performance and improved aesthetics. Power access plate mounted on back of fixture for easy access to wiring in addition to various knockouts along back of fixture. Product proudly assembled in the United States of America.

ELECTRICAL

Class 2 LED light engine for high efficacy and long life. Calculated L70 > 100,000 hrs and L90 > 54,000hrs. LED Lumen Maintenance Estimates based on TM-21 projections for the light source at 25°C ambient. Power Factor > 0.90. Standard 120-277 Vac 0-10V dimmable (10%-100%) with optional 1%, DALI Ready & Bi-Level options available. Optional emergency battery backups available to meet critical life safety lighting requirements.

INSTALLATION

Designed for a variety of wrap solutions including ceiling, wall and suspension mounting. Knockouts located on back and each end of fixture for electrical access.

OPTICS

High transmission extruded impact resistant PMMA frosted acrylic lens for durability and LED glare reduction.

CONTROLS

Factory installed Advanced sensor options available to maximize energy savings. Sensors are installed integral to the fixture body. Please see more information below on Pages 3 & 4. Inquire with manufacturer for additional controls options, including customer supplied items.

CERTIFICATIONS

ETL Listed to US and Canadian safety standards. Suitable for damp locations. BAA Compliant. Title 24 Compliant with sensor option; see local ordinance for qualification information. DLC (DesignLights Consortium) Standard Qualified. Please refer to the DLC Qualified Products List at www.Designlights.org/QPL to confirm specific product qualifications.

WARRANTY

5 Year Warranty Standard; 10 Year Warranty Optional ([Terms and Conditions apply](#)).



SQ-WB

CURVED WIDE BASE WRAP

ORDERING GUIDE

PART # Example: SQ8-8L-U-40-WB-NURO

SERIES	LUMENS	DRIVER	CCT	WIDE BODY	ALT DRIVERS
SQ4 4' Curved Wrap	2L 2,000 lm 4L 4,000 lm 6L 6,000 lm	U 120-277V	50 5000K 40 4000K 35 3500K 30 3000K	WB Wide Base	BLANK None SR Sensor Ready Driver DR DALI-Ready Driver BLD ¹⁰ Bi-level Dimming Driver (2 hot leads) DIM1 1% Dimming Driver
SQ8 8' Curved Wrap	4L 4,000 lm 8L 8,000 lm 12L 12,000 lm				

EMERGENCY	
BLANK	None
EM5	5W Battery Backup
EM5/HE ²	5W Battery Backup
EM7	7W Battery Backup
EM7/HE ²	7W Battery Backup
EM10	10W Battery Backup
EM10/HE ²	10W Battery Backup
EM10/HE/SD ²	10W Self Diagnostic Battery Backup
EM12	12W Battery Backup

CONTROLS OPTIONS			
BASIC		ADVANCED	
BLANK	None	BLANK	None
FIOS ⁴	On/Off Occupancy Sensor	NURO ^{4,5}	NUROAir Integrated Bluetooth Groupable Sensor
USBD ⁴	Allows the end user to manually select the unoccupied dimming level and adjust the high-end trim if desired.	ESMC ^{4,5}	EasySense Grouping Sensor
BDxx ⁴	Preset Bi-Level Dim Sensor (xx=%eg.20,30)	5S/CU/CL ⁴	Enlighted 5E Connected Lighting (CL) Sensor with Control Unit
		5S/CU/IOT ⁴	Enlighted 5E Internet of Things (IOT) Sensor with Control Unit
		VDO ^{4,6}	Lutron Vive DFCSJ-OEM-OCC (Daylight & Occupancy)
		VRF ^{4,6}	Lutron Vive DFCSJ-OEM-RF (RF Only)
		AWN ⁶	Lutron Athena Wireless Node RF only
		AWNS ⁶	Lutron Athena Wireless Node with Sensor

STEP DOWN	MOUNTING	WIRING	CORD	WARRANTY
BLANK None SD480 ^{8,9} 480V Step Down Transformer SD347 ^{8,9} 347V Step Down Transformer	BLANK None FMB/HUB34 ⁷ Fixture Mounting Box with Conduit Hub 34" for Pendant Mount ASLFMB/HUB34 ⁷ Adjustable Sliding Fixture Mounting Box system (with alignment bracket)	BLANK None RW/3W ³ 3 wire raceway wiring harness for continuous wiring through fixtures (non-dim function) RW/5W ³ 5 wire raceway wiring harness for continuous wiring through fixtures	BLANK None Cx/yW Cord (x = Length;6,10,15) (y = # of conductors; 3,4,5,6)	BLANK 5 Year 10YR ¹ 10 Year

SHIP WITH ACCESSORIES	
NURO-SW-3B-BA-BL-WP-V1	NUROAir Bluetooth 3-Key Wireless Battery Powered Wall Switch
NURO-SW-5B-BA-BL-WP-V1	NUROAir Bluetooth 5-Key Wireless Battery Powered Wall Switch
NURO-SW-7B-AC-BL-WP-V1	NUROAir Bluetooth 7-Key Line Voltage (AC 120-277V) Powered Wall Switch
ESMC/WWS/DR	Wireless Wall Dual Rocker Switch To Control Each ES Group Of Fixtures
+SQ-WB-ALBR	Alignment Bracket (used to align fixtures mounted in continuous rows)
ACXY	Adjustable Y-Toggle aircraft cable set (x=5' or 10')

FOOTNOTES

- ¹Contact factory for more details
- ²CEC Title 20 Compliant
- ³Used only when mounting in continuous rows
- ⁴Integral to fixture
- ⁵Easily Controlled via Mobile Phone with Bluetooth App
- ⁶Must be used with SR Driver
- ⁷One needed per 4ft section
- ⁸Not listed on DLC
- ⁹Not compatible with EM options
- ¹⁰Will not work with the stepdowns or sensors



SQ-WB

CURVED WIDE BASE WRAP

LED SYSTEMS INFO

LED SYSTEMS INFO ¹	3000K CCT		3500K CCT		4000K CCT		5000K CCT		Watts ²	CRI	Ambient Temperature Range
	Part #	Lumens	Efficacy	Lumens	Efficacy	Lumens	Efficacy	Lumens			
SQ4-2L-U-XX-WB	2,216 lm	144 lm/W	2,247 lm	146 lm/W	2,278 lm	148 lm/W	2,340 lm	152 lm/W	15 W	>80	-4°F to 113°F
SQ4-4L-U-XX-WB	4,060 lm	138 lm/W	4,117 lm	142 lm/W	4,174 lm	144 lm/W	4,288 lm	148 lm/W	29 W	>80	-4°F to 113°F
SQ4-6L-U-XX-WB	5,501 lm	128 lm/W	5,582 lm	130 lm/W	5,659 lm	131 lm/W	5,866 lm	135 lm/W	43 W	>80	-4°F to 113°F
SQ8-4L-U-XX-WB	4,574 lm	144 lm/W	4,620 lm	145 lm/W	4,665 lm	146 lm/W	4,757 lm	149 lm/W	32 W	>80	-4°F to 113°F
SQ8-8L-U-XX-WB	7,715 lm	133 lm/W	7,792 lm	134 lm/W	7,869 lm	135 lm/W	8,023 lm	138 lm/W	58 W	>80	-4°F to 113°F
SQ8-12L-U-XX-WB	10,500 lm	121 lm/W	10,605 lm	123 lm/W	10,710 lm	124 lm/W	10,920 lm	126 lm/W	87 W	>80	-4°F to 113°F

¹LED Chips are frequently updated therefore values are nominal

²Electrical data at 25C (77F). Actual wattage may differ by +/-10%.

BASIC CONTROLS OPTIONS

FIOS

Standard on/off motion sensor that provides 360° detection of motion from 8 to 20 ft mounting heights. Sensor installed integral to fixture.

USBD

User Selectable Bi-Level Dimming. Allows the end user to manually select the unoccupied dimming level. Once motion is detected, the fixture will return to 100% light output. Sensor integral to fixture.

BDxx

Factory set Bi-Level Dimming. Sensor is set to dim level, as indicated in the "xx" portion of the part number, when the area is unoccupied. Example: BD20 sets the fixture to dim down to 20% lumen output when the area is unoccupied. Once motion is detected, the fixture will return to 100% light output. Sensor integral to fixture.

ADVANCED CONTROLS OPTIONS

NUROAir by ILLUMUS

NURO

NUROAir Integrated Bluetooth Sensor is the optimal groupable controls lighting solution. With main features such as PIR Motion Sensing, Occupancy/Vacancy, Bi-Level Dimming and Daylight Harvesting - this flexibility makes the NUROAir Integrated Sensor ideal for tailoring lighting to specific space needs, optimizing both ambiance and efficiency. The NUROAir App, available for download on iOS and Google Play Store, offers a user-friendly interface for automatic or manual customization of your space. Through the app, users can configure sensor settings such as the Light Output, Hold Time, Standby Time/Level, High/Low End Trim, Background Light Level, Set Schedules, and Control Lighting Groups or Zones, all from a mobile or tablet device. Manual control is also available with a range of compatible wireless & wired wall switch options.



POWERED BY ILLUMUS, BRANDS



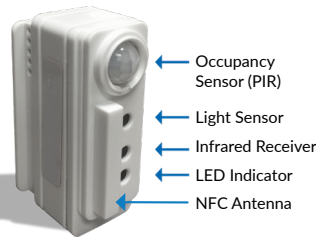
Click Here or Scan Code to Learn More About

NUROAir Bluetooth Controls

EASYSense

ESMC

EasySense sensor combines occupancy sensing, daylight harvesting and institutional tuning in one compact solution. This is an ideal control for any Commercial application. Each device allows you to turn on/off occupancy and/or daylight harvesting functions as well as set the full light output, background light level, occupancy prolong time, occupancy grace fading time & occupancy time out/hold time. It can be easily controlled via the Philips MasterConnect Bluetooth App on a mobile phone.



ESMC/WWS/DR

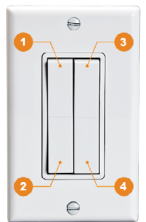
Optional Wireless / Batteryless Dual Rocker Wall Switch. Up to 100ft range. Functions include: On/Off, dimming and setting of (2) scenes for full room control.

Specifications:

- Wireless
- Batteryless
- Dual Rocker
- ZigBee®
- 30-100ft Range

Functions:

1. On (Hold to brighten up)
2. Off (Hold to dim down)
3. Scene 1
4. Scene 2



ENLIGHTED

5S/CU/CL

Bundled System with Enlighted 5E sensor (SU-5E-CL), Control Unit (CU-4E-FM) and Cable (CBL-5E-CU4-30N). Fixtures are controlled based on occupancy and ambient light. Includes individual lighting control plus connection to Enlighted Energy Manager. The Energy Manager provides data analysis for all data collected by the Enlighted Smart Sensors for energy, occupancy and environment. Provided with factory installed components only. Enlighted system provided by others. Contact factory for more information.

5S/CU/IOT

Bundled System with Enlighted 5E sensor (SU-5E-IOT), Control Unit (CU-4E-FM) and Cable (CBL-5E-CU4-30N). Fixtures are controlled based on occupancy and ambient light. Includes individual lighting control plus connection to Enlighted Energy Manager. Energy Manager provides data analysis for all data collected by Enlighted Smart Sensors for energy, occupancy & environment. Additionally, the IOT functionality takes the data access and function beyond just lighting to a wide range of applications beyond the standard connected lighting controls. Provided with factory installed components only. Enlighted system provided by others. Contact factory for more information.



SQ-WB CURVED WIDE BASE WRAP

ADVANCED CONTROLS OPTIONS *Continued*

LUTRON

VDO

Vive DFCSJ-OEM-OCC integral fixture control sensor with daylight & occupancy. Vive provides intuitive programming allowing for maximum flexibility with wireless communication & sensing as desired. Provided with factory installed components only. Lutron system provided by others. Sensor must be used in conjunction with Pico Switch/Dimmer. Cannot be used in conjunction with mechanical on/off power switch. Contact factory for more information.



VRF

Vive DFCSJ-OEM-RF integral fixture control with Radio Frequency (RF) communication. Vive provides intuitive programming allowing for maximum flexibility with wireless communication as desired. Provided with factory installed components only. Lutron system provided by others. Sensor must be used in conjunction with Pico Switch/Dimmer. Cannot be used in conjunction with mechanical on/off power switch. Contact factory for more information.



AWNDR

Athena wireless node is a radio frequency (RF) device that enables simple, digital control of individual light fixtures in an Athena control system. Enables individual wireless control of each fixture in an Athena control system. Accommodates zone and control changes without rewiring. All drivers on the link are controlled as a single zone. Provided with factory installed components only. Lutron Athena system provided by others.



AWNS

Athena wireless node with a sensor that enables simple, digital control of individual light fixtures in an Athena control system. Provides wireless control of the fixture and includes a passive infrared (PIR) sensor for occupancy and a daylight sensor. Enables individual wireless control of each fixture in an Athena control system. Accommodates zone and control changes without rewiring. All drivers on the link are controlled as a single zone. Provided with factory installed components only. Lutron Athena system provided by others.

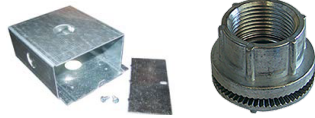


OPTIONS



Cx/yW

Cords available in 6ft, 10ft, 15ft
(Inquire for additional options)
Plug options available



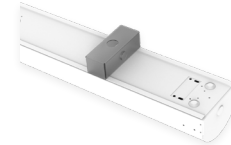
FMB/HUB34

Includes rigid box to attach to the fixture,
provides for dual point mounting to accept a
pendant, hook and conduit hub
3/4" for Pendant Mounting



ACxY

Includes 2 adjustable cable
hangers. Available in 5', 10',
15' & 20'

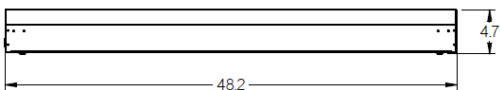
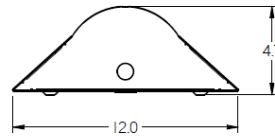
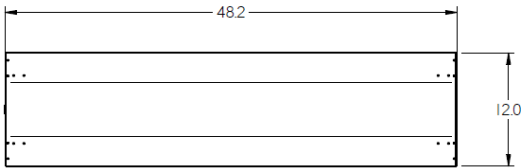


ASLFMB

Adjustable Sliding Fixture
Mounting Box system
(with alignment bracket)

LINE DRAWINGS

4ft Dimensions



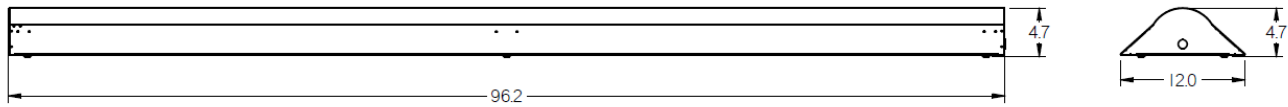
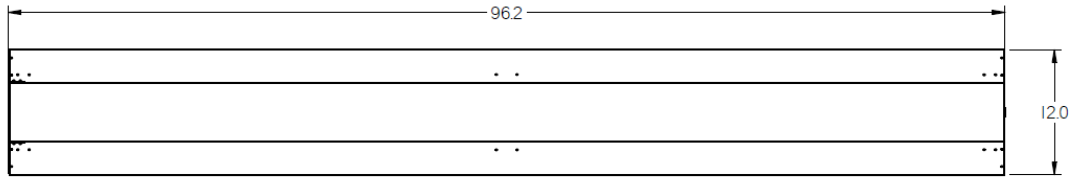


SQ-WB

CURVED WIDE BASE WRAP

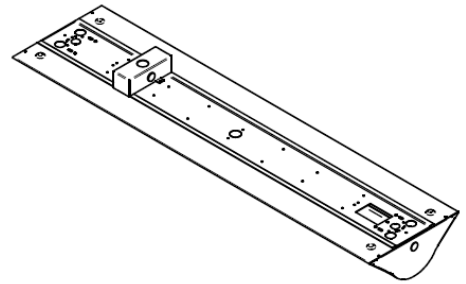
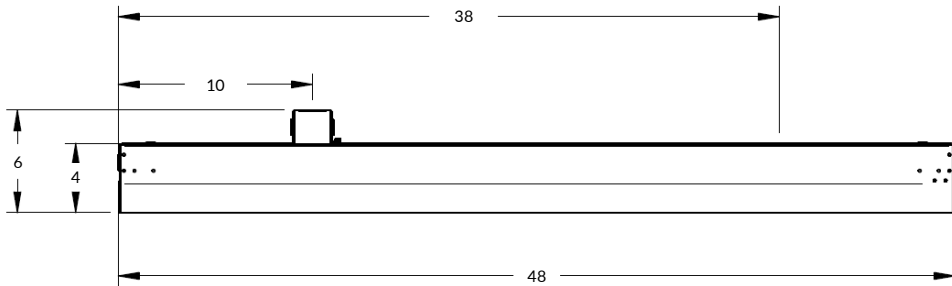
LINE DRAWINGS Continued

8ft Dimensions



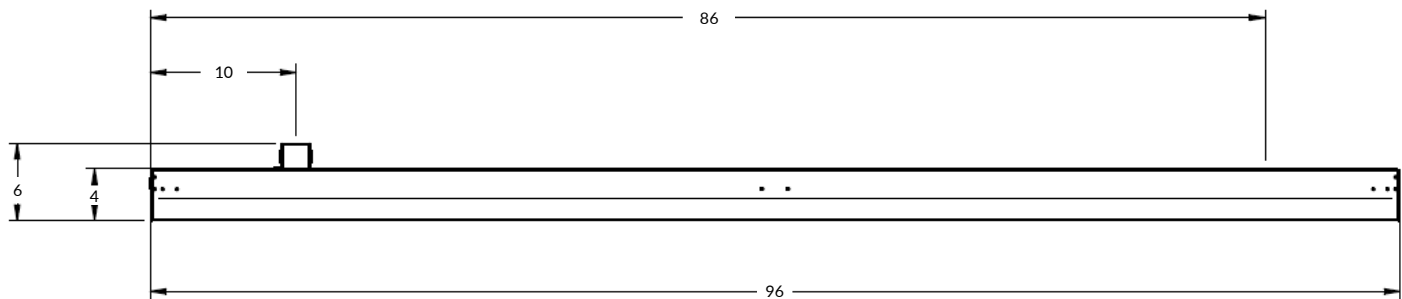
ASLFMB OPTION DETAILS

4ft Model



*Dimensions shown above are applicable when the fixtures are the middle units of a continuously mounted set of fixtures. Please see installation instructions for limitations on end mounted fixtures.

8ft Model



*Dimensions shown above are applicable when the fixtures are the middle units of a continuously mounted set of fixtures. Please see installation instructions for limitations on end mounted fixtures.



SQ-WB

CURVED WIDE BASE WRAP

PHOTOMETRIC DATA

LUMINAIRE DATA	
Part Number	SQ4-4L-U-40-WB
Description	4ft Curved Wide Base Wrap, 4,000 Lumens, 4000K, Frosted Lens
Fixture Lumens (lm)	4178 lm
Wattage (W)	29W
Efficacy (lm/W)	144 lm/W
Mounting	Pendant
Spacing Criteria	0° = 1.19, 90° = 1.32

ZONAL LUMEN SUMMARY		
Zone	Lumens (lm)	% Fixture
0° - 40°	1587	38%
0° - 60°	2829	68%
0° - 90°	3956	95%
90° - 180°	222	5%
0° - 180°	4178	100%

