



BAA Buy American Act

TAA Trade Agreement Act

PRODUCT LINE UP



BAA Buy American Act

TAA Trade Agreement Act



ILLUMUS PROUDLY COMPLIES WITH THE BUY AMERICAN ACT

ILLUMUS, powered by GREEN CREATIVE and ILP, has built a reputation for creating consistent, reliable lighting products by hardworking Americans. We continue to serve our customers with American ingenuity, with products built in Sanford, Florida, USA.

The Buy American Act (BAA) restricts the purchase of non-domestic end products for use within the United States and uses a two-part test to define a domestic end product:

- The product must be manufactured in the United States
- The cost of domestic components must exceed 65% of the total component cost

A product is Trade Agreements Act (TAA) compliant if it is manufactured or substantially transformed in the United States or in a TAA-designated country.

All ILLUMUS products listed in this brochure meet the stringent requirements set by BAA or TAA and proudly display the appropriate compliance logos on all marketing materials, making it easy to identify qualifying products. When purchasing BAA or TAA products, always verify compliance.





HIGH BAYS

Superior performance and durability go hand in hand. Best for production facilities, warehouses, big-box stores, and 24/7 facilities, High Bay lights offer both high lumen output and a robust design. These low-maintenance, high-power fixtures often include sensors and wireless controls, providing additional energy savings.

ENDEAVOUR HIGH BAY (EDV 2.0)



Endeavour 2.0 is the linear high bay of the future. Sturdy - but sleek, it features an aluminum body with curved end caps in white, black or custom finishes to suit even the most unique project aesthetics. Endeavour 2.0 is built to withstand high abuse applications with an IK10 impact rating - the highest impact rating. Endeavour 2.0's uplight option provides enhanced full room illumination, while the high performance narrow and wide distribution optics provide superior horizontal or vertical light levels with excellent uniformity.



ROUND LOW BAY (UFO-LB)

- Visually comfortable illumination
- 10% uplight reduces cave effect
- Sensor & wireless controls ready



GRID FRAME HIGH BAY (GH)

- High performance recessed high bay
- Various lens options for aesthetics
- 2x2' & 2x4' sizes



INDIRECT HIGH BAY (PHB-TC)

- Inverted mounting for indirect distribution
- 100% glare reduction
- 75,000 - 97,000 lumen packages



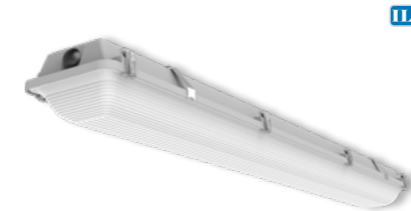
VAPOR TIGHTS AND KITS

Vapor tights are sealed and gasketed luminaires that are best used in extreme environments. Though these fixtures are often found around wet locations or in freezers and refrigerated areas, they are suitable for any industrial or commercial application where safety and protection are a must.

MONSOON LINEAR VAPOR TIGHT (MSN)



Monsoon is a high-performance linear vapor-tight luminaire engineered for demanding environments that require superior durability and sanitation. Built for aggressive wash-down conditions, it carries an IP69 rating and withstands high-pressure, high-temperature cleaning up to 176°F, making it ideal for rigorous sanitation cycles. Its smooth, circular housing minimizes debris and residue buildup to support faster, more effective cleaning in food-zone applications, with NSF certification pending. Constructed with stainless steel end caps and NEMA 4X protection, Monsoon is designed to endure corrosive, wet, and harsh industrial settings. With flexible performance packages ranging from 2,000 to 20,000 lumens, efficacy up to 140 lm/W, and multiple CCT and CRI options, Monsoon delivers versatile, high-quality illumination for a wide range of applications.



NARROW LINEAR VAPOR TIGHT (WTZ)

- Sealed and gasketed vapor tight
- Durable construction for the harshest environments
- 2', 4' & 8' sizes



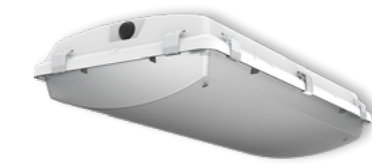
VAPOR TIGHT RETROFIT KIT (VTR)

- Easy upgrade to LED
- Long list of compatible luminaires
- Installs in 4' or 8' housing in 5 mins or less



VAPOR TIGHT HB RETROFIT (BLR)

- Easy upgrade to LED
- Long list of compatible luminaires
- Installs in 4' housing in 5 mins or less



BLIZZARD HIGH BAY (BL)

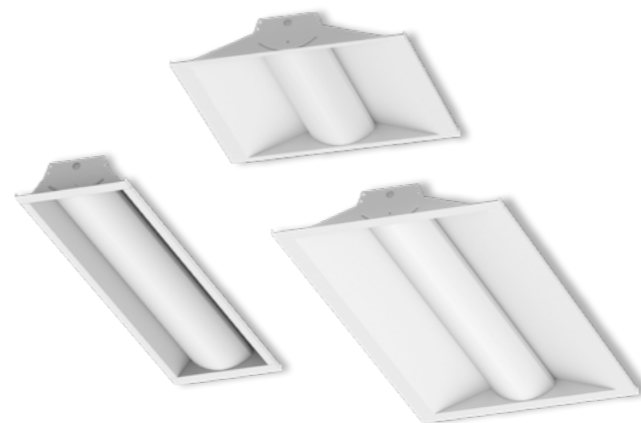
- Robust & Durable Wide Body Vapor Tight High Bay
- Industry Leading Max Ambient up to 140°F
- 2ft & 4ft Fixture Lengths



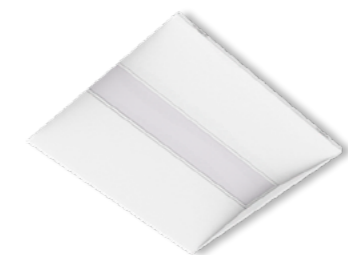
TROFFERS AND KITS

The preferred choice for schools, offices, and a variety of commercial applications, LED troffers provide enhanced aesthetics while optimizing energy savings. These sleek, solid-state luminaires are perfect for new construction or retrofit applications.

VOLUMETRIC TROFFER (VOLA)



VOLA is designed for rigidity, durability and ease of installation while providing maximum performance and improved aesthetics. With an exceptionally robust offering of lumen outputs, sizes and options, VOLA is designed for a multitude of applications.



FLAT VOLUMETRIC TROFFER (FLT)

- Flat lens volumetric design
- Delivers smooth uniform illumination
- Tamper resistant design



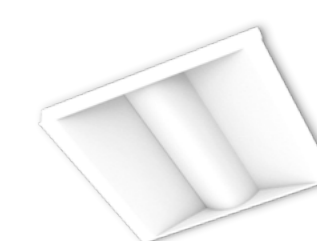
VOLUMETRIC RETROFIT KIT (LANCE)

- Architecturally designed volumetric troffer retrofit kit
- High efficacy - up to 151 lm/W for enhanced energy savings
- Advanced controls options for asset tracking



DISCOVERY NARROW TROFFER (DNT)

- Sleek, compact and modern troffer
- Slim 4" lens width
- Grid, Flange, Surface & Skylight mounting options
- 1,000 to 12,000 Lumens
- 2', 4', & 8' Sizes



VOLUMETRIC SELECTABLE TROFFER (VST)*

- BAA Optional
- Volumetric design
- Lumen & CCT selectable
- 1x4', 2x2' & 2x4' sizes
- * BAA is optional



VOLUMETRIC SELECTABLE KIT (VTK)*

- Shallow, Lightweight, 3-Piece Versatile Volumetric Selectable Troffer Retrofit Kit
- 1x4', 2x2', & 2x4' Sizes
- 2,000 to 5,000 Lumens
- * BAA is optional



STRIPS AND KITS

LED Strips offer a sleek and versatile solution for new construction or retrofit projects. These fixtures can be mounted in continuous rows or as stand-alone luminaires and are simple to install. Various lengths, features and aesthetics are available, providing optimal flexibility when needed most.

DISCOVERY LINEAR STRIP (DSC)



VARI LINEAR RETROFIT (VLR)

- Highly configurable & adaptable BAA linear retrofit
- 4' & 8' lengths available
- 8 lumen packages ranging 2,000 - 12,000



UNIVERSAL LIGHT BAR KIT

- 25W-90W fluorescent replacement
- Magnets and quick connectors design
- Field selectable power levels



The Discovery Linear Strip is a highly configurable BAA spec grade strip luminaire. The injection-molded endcaps smooth designs have no visible fasteners. The luminaire comes in three sizes (2', 4', 8'), with vast lumen ranges and four different mounting options, catering to your project aesthetics, functionality, and flexibility. *To cater to your space and maximize energy savings.

*The DSC is compatible with a variety of wireless grouping controls



WRAPS & STAIRWELL

Wrap lighting is perfect for both high-traffic areas like workspaces and common rooms, as well as low-traffic areas such as storage rooms, restrooms, and stairways. These luminaires are ideal for spaces with unique designs or uncommon angles, where operators need to maximize light output in key locations.

CURVED WRAP (SQ)



The SQ wrap's modern sleek curved profile provides smooth uniform illumination with an enhanced feature set. Maximize scalability with its various lengths, lumen range, controls options and mounting options for surface, pendant and continuous row applications.



CURVED WIDE BASE WRAP (SQWB)

- Covers existing wide wrap footprints
- Suitable for installing in continuous runs
- 2', 4' & 8' lengths



NARROW WRAP (FNW)

- Narrow & sleek 9" width design
- Molded end cap for polished appearance
- 4ft & 8ft lengths



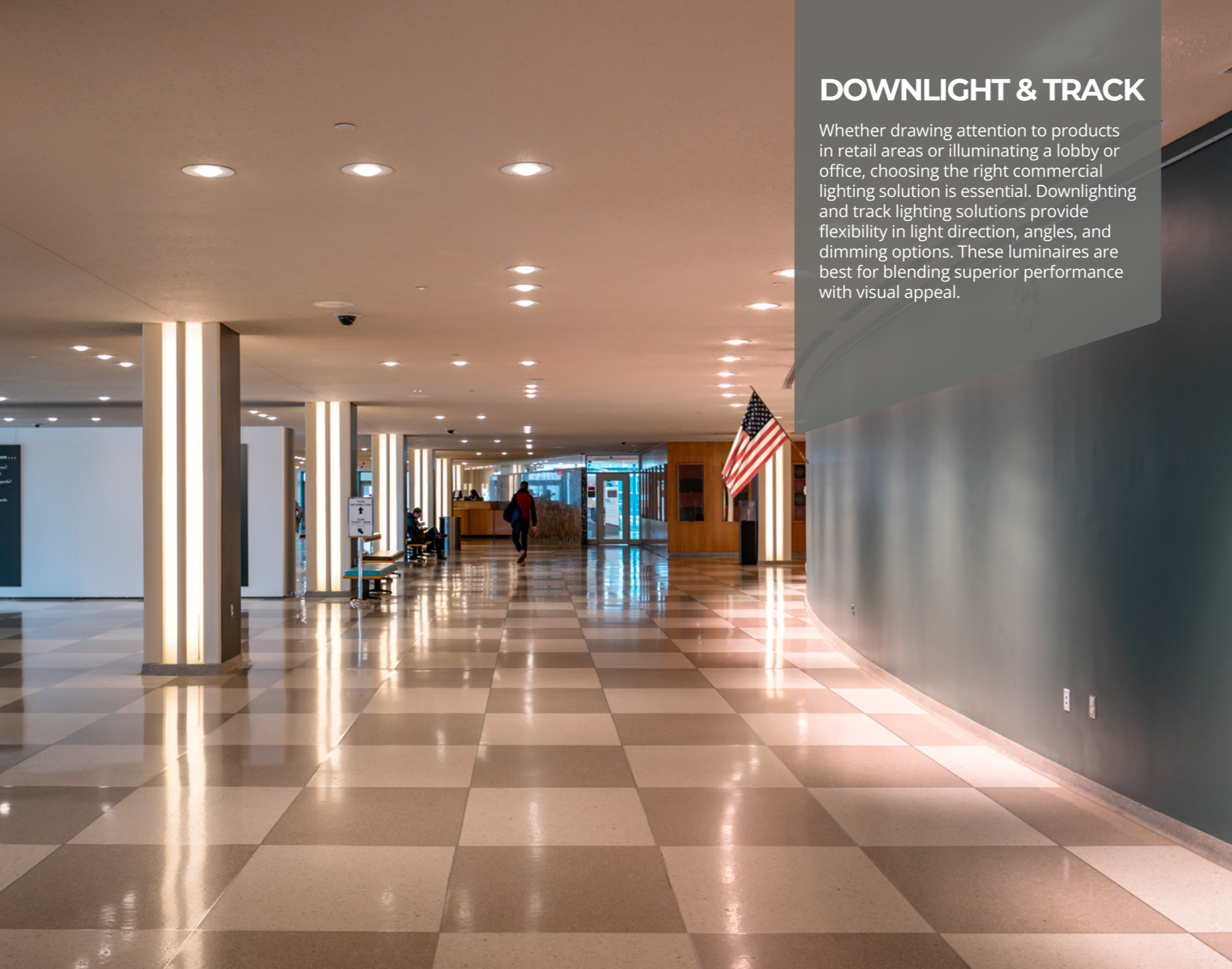
WIDE WRAP (FWW)

- 13" width covers existing wrap footprints
- Molded end cap for polished appearance
- 4ft & 8ft lengths



CAVERN STAIRWELL (CV)

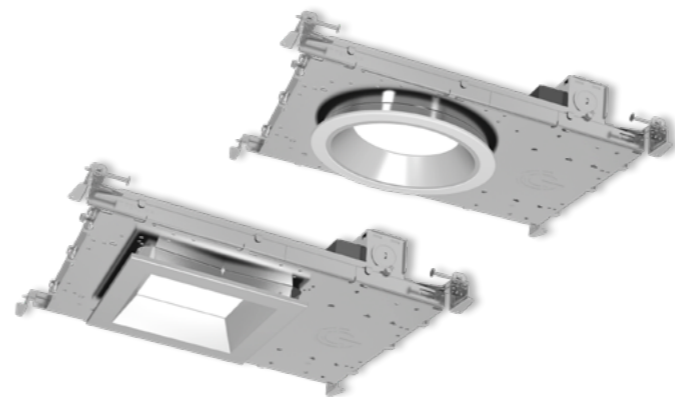
- Specification grade robust design
- Bluetooth programmable ultrasonic sensor
- Emergency integration achieves life safety requirements



DOWNLIGHT & TRACK

Whether drawing attention to products in retail areas or illuminating a lobby or office, choosing the right commercial lighting solution is essential. Downlighting and track lighting solutions provide flexibility in light direction, angles, and dimming options. These luminaires are best for blending superior performance with visual appeal.

NYX NEW CONSTRUCTION



Select Kelvin Select Drive DualDim



With integrated SelectDrive, SelectKelvin and DualDim technologies, abundant options of field installable accessories, and unique compact design, NYX revives customized downlighting design for any new construction project.



SPECFIT NEW CONSTRUCTION

- Specification grade lighting performance
- Adjustable lumen output up to 5,000lm
- TRUE CHROMA options for superior color accuracy



ORBIT TRACK

- Specification grade & performance design
- Spot, narrow & flood interchangeable optics
- Industry leading lumen selectable output range



PXCYL CYLINDERS

- Elegant design with wide application use
- Five interchangeable beam angles
- Industry leading lumen selectable output up to 5,000lm



SOL TRACK HEAD

- Integrate durable track housing with upgradable LED PAR lamps
- 2-plane gimbal design
- Options of H and J type adapters

HAZARDOUS LOCATIONS

In environments where safety is paramount, selecting the right hazardous location lighting is critical. Designed to withstand harsh conditions, these luminaires provide reliable illumination in areas where flammable gases, vapors, or combustible dust may be present. With rugged construction and certified performance, our hazardous location fixtures ensure durability, compliance, and optimal visibility without compromising efficiency.

HAZARDOUS LOCATION VAPOR TIGHT HIGH BAY (HZB)



HAZARDOUS LOCATION LINEAR VAPOR TIGHT (HZV)

- Certified for hazardous locations (Class 1 Div 2, UL844)
- Durable design with high impact, water, and dust resistance (IP65-IP67, NEMA 4X)
- High efficacy up to 156 lm/W with lumen packages from 2,000–24,000



The HZB Series delivers powerful illumination for hazardous environments, built to withstand exposure to flammable gases, vapors, and combustible dust. This rugged high-bay luminaire offers a reliable one-for-one replacement for HID fixtures, maximizing efficiency with high-output LED performance and a durable, corrosion-resistant design. With multiple lumen packages, mounting options, and IP66-rated protection, it ensures superior illumination, safety, and longevity in the toughest conditions. As part of ILP's Class 1 Division 2 UL844 Listed lineup, the HZB exemplifies American-made quality, featuring industry-leading operating temperatures, exceptional efficacy, and versatile configurations for unmatched performance in demanding applications.



OUTDOOR

From gardens to parking lots, outdoor lighting applications are as diverse as the products that serve them. Outdoor lights not only offer safety and security but can also provide visual comfort. Area lights and vapor tights illuminate parking areas or corridors, while wall packs and bollards illuminate pathways and building facades.

SKYLINE AREA & FLOOD (SA/SF)

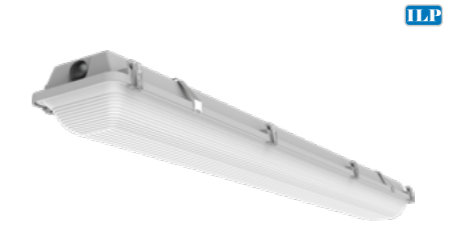


The Skyline's sleek aesthetic makes it perfectly suited for warehouse area & flood applications. Designed for both new construction and retrofit, the Skyline provides a one-for-one solution for replacing legacy metal halide or high pressure sodium luminaires. Priced for payback, it's cost-effective die-cast aluminum housings comes in 2 sizes and DLC Premium efficacies, making it the best choice for low acquisition cost and high energy savings. The highly configurable Skyline provides superior illumination, reliability, and ease of installation, exceeding most application requirements.



SKYLINE WALLPACK

- Specification Grade die-cast aluminum housing
- Available in three sizes, delivering 1,000 to 24,000 lumens at up to 160 LPW
- Quick mount bracket enables hands-free wiring and simplifies installation



NARROW LINEAR VAPOR TIGHT (WTZ)

- Sealed and gasketed vapor tight
- Durable construction for the harshest environments
- 2', 4' & 8' sizes



POLES & BRACKETS

- Straight square steel poles up to 40'
- Multiple bullhorn, wall, and wood pole mounting options
- Adapters for every site scenario



ROUND PARKING GARAGE (UFO)

- Visually comfortable illumination
- 10% uplight reduces cave effect
- Sensor & wireless controls ready



BOLLARDS (BLDT & BLFT)

- 6" flat or dome top bollards
- Value driven, quick ROI
- Multiple beam patterns

BAA Buy American Act
TAA Trade Agreement Act
**PRODUCT
LINE UP**



GREENCREATIVE

www.greencreative.com



www.ilp-inc.com

An ILLUMUS Brand

www.ILLUMUS.com