



**BABA  
COMPLIANT  
PRODUCTS**





# CONTENT

<b>WHAT IS BABA</b>	<b>1</b>
<b>HOW WE FOLLOW REGULATIONS</b>	<b>3</b>
<b>QUALIFYING PRODUCTS</b>	
- HAZARDOUS	<b>5</b>
- STRIPS & KITS	<b>5</b>
- STAIRWELL	<b>6</b>
- TROFFERS & TROFFER KITS	<b>6</b>
- WRAPS	<b>7</b>
- VAPOR TIGHTS	<b>8</b>

## WHAT IS BABA?

The Build America, Buy America (BABA) Act was enacted as part of the Infrastructure Investment and Jobs Act of 2021 to emphasize the use of American-made products in infrastructure projects funded by Federal financial assistance.

The BABA Act prioritizes three specific categories of products: iron or steel products, construction products, and manufactured products, including LED lighting projects.

To comply with the BABA Act, products must be manufactured in the United States, with the cost of domestic components exceeding 55 percent of the total component cost. This stipulation is known as the Buy America Requirement.



## **BAA VS BABA**

While both the BAA and BABA aim to promote the use of American-made products, they do so within different contexts and with slightly different requirements and scopes.

### **KEY DIFFERENCES**

#### **Scope and Focus**

BAA: Primarily targets infrastructure projects, when the federal government is buying for its own use (ie: the Army purchasing material for building renovation).

BABA: Applies to all federal procurements, not just infrastructure, where the federal government is providing financial assistance (ie: the government providing funding for a school renovation).

#### **Product Coverage**

BAA: Focuses on iron, steel, manufactured products, and construction materials. 65% of total cost of components must be from the US, with a COTS ("Commercially Available Off-the-Shelf") exception available.

BABA: Covers a broader range of goods and materials used in government contracts. 55% of total cost of components must be from the US, with no COTS exceptions.

#### **Exemptions and Waivers**

Both acts allow for certain exemptions, but the specific conditions and processes for obtaining these waivers may differ.

## **WHAT THIS MEANS FOR YOU**

### **ACCESS TO GOVERNMENT PROJECTS**

Collaborating with manufacturers who comply with BABA standards enables companies to participate in government-funded projects and contracts, expanding their market opportunities.

### **ENSURING COMPLIANCE AND ADHERING TO REGULATIONS**

Working with compliant manufacturers guarantees that products used or integrated into projects meet regulatory standards, minimizing potential risks of non-compliance penalties.

### **COMPETITIVE ADVANTAGE**

Collaborating with ILP can enhance your competitive advantage in securing government contracts or projects requiring BABA compliance, increasing the likelihood of winning bids. And as your trusted partner, your wins are our wins.



## HOW WE FOLLOW REGULATIONS



### Domestic Material Sourcing

Securing materials and components from domestic or authorized sources to meet the required percentage of domestic content as specified by the regulations.



### Approved Manufacturing Locations

Conducting manufacturing activities within the designated countries or regions as specified by the regulations.



### Supply Chain Transparency

Maintaining thorough records of the supply chain, manufacturing processes, and material origins to demonstrate compliance during audits or inspections.



### **Supplier Compliance Collaboration**

Partnering with suppliers and vendors who follow BABA guidelines to ensure compliance across the entire supply chain.



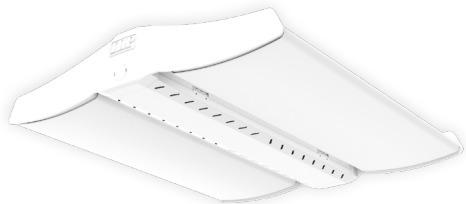
### **Regulatory Monitoring & Adaptation**

Continuously tracking regulatory changes and adjusting company practices and policies as necessary to maintain compliance.



## QUALIFYING PRODUCTS

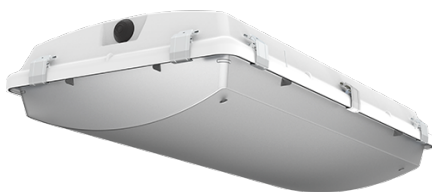
### LINEAR HIGH BAY



ENDEAVOUR 2.0 (EDV2)

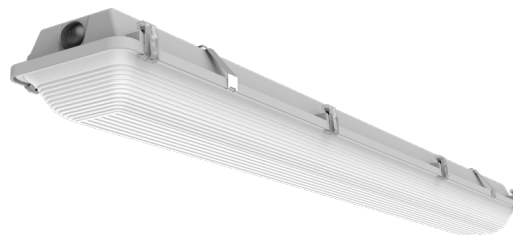
[LEARN MORE](#)

### HAZARDOUS



HAZARDOUS HIGH BAY  
(HZB)

[LEARN MORE](#)

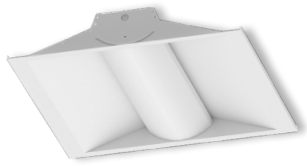


HAZARDOUS VAPOR TIGHT  
(HZV)

[LEARN MORE](#)

# QUALIFYING PRODUCTS

## TROFFERS & TROFFER KITS



VOLUMETRIC TROFFER (VOLA)

[LEARN MORE](#)



VOLUMETRIC TROFFER RETROFIT KIT (LANCE)

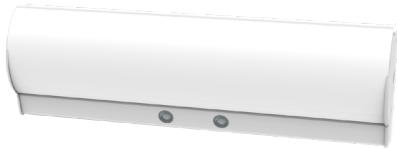
[LEARN MORE](#)



DISCOVERY NARROW TROFFER (DNT)

[LEARN MORE](#)

## STAIRWELL



CAVERN STAIRWELL (CV)

[LEARN MORE](#)

## STRIPS & KITS



VARI LINEAR RETROFIT (VARI)

[LEARN MORE](#)



DISCOVERY LINEAR STRIP (DSC)

[LEARN MORE](#)



## QUALIFYING PRODUCTS

### WRAPS



CURVED WRAP (SQ)

[LEARN MORE](#)



CURVED WIDE BASE WRAP (SQ-WB)

[LEARN MORE](#)



NARROW WRAP (FNW)

[LEARN MORE](#)



WIDE WRAP (FWW)

[LEARN MORE](#)

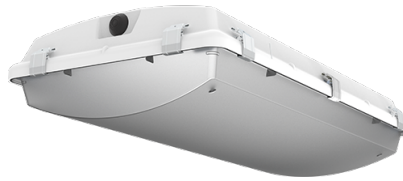
# QUALIFYING PRODUCTS

## VAPOR TIGHTS



MONSOON LINEAR  
VAPOR TIGHT (MSN)

[LEARN MORE](#)



VAPOR TIGHT  
HIGH BAY (BL)

[LEARN MORE](#)



NARROW LINEAR  
VAPOR TIGHT (WTZ)

[LEARN MORE](#)



**BABA  
COMPLIANT  
PRODUCTS**



[www.ilp-inc.com](http://www.ilp-inc.com)

**An ILLUMUS Brand**

[www.ILLUMUS.com](http://www.ILLUMUS.com)