

VTK

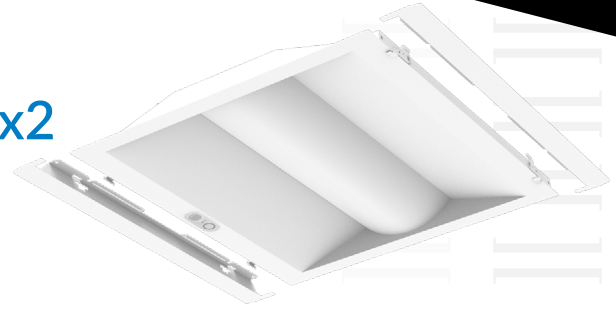
VOLUMETRIC TROFFER KIT
CONTROLS READY



KEY FEATURES

- Available in 1x4, 2x2, & 2x4 Sizes with a Lumen Range from 2,000 to 5,000 Lumens
- CCT and Lumen Field Selectable, with optional factory pre-set selections for customized ambiance and application
- High Efficacy (Up to 160 LPW) provides lower operational costs compared to traditional fluorescent fixtures
- Controls ready interface with NUROAir System

2x2

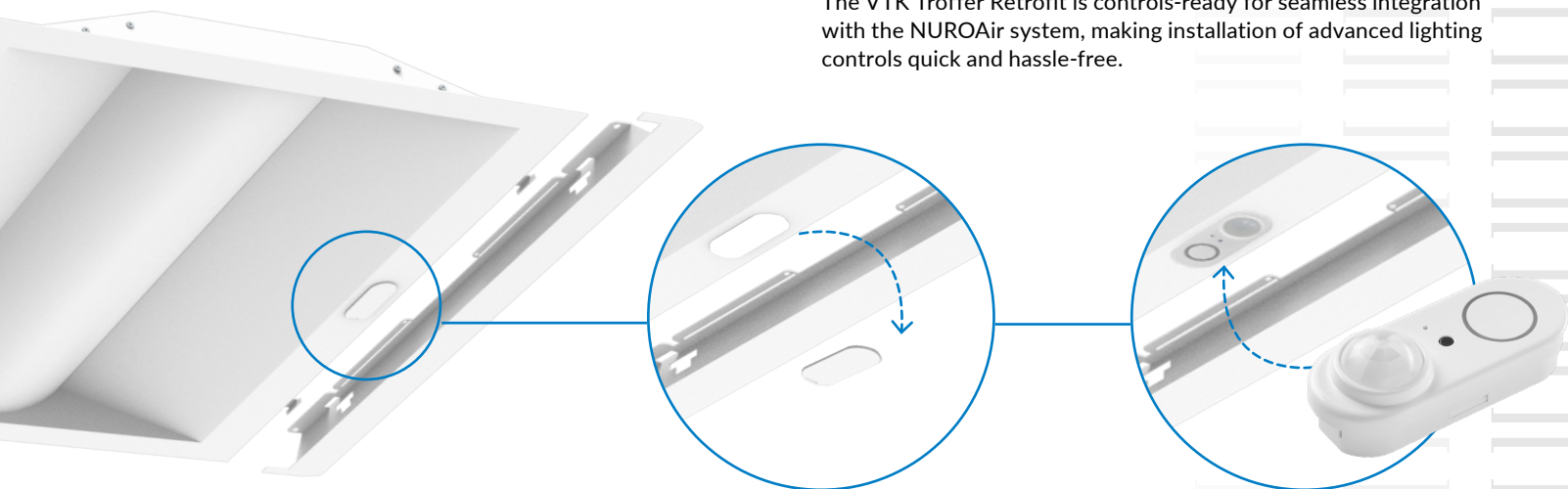


1x4



CONTROLS-READY

The VTK Troffer Retrofit is controls-ready for seamless integration with the NUROAir system, making installation of advanced lighting controls quick and hassle-free.



SUITABLE APPLICATIONS

Education • Healthcare • Offices • Grocery Store • Retail • Storage Facility • Conference Rooms





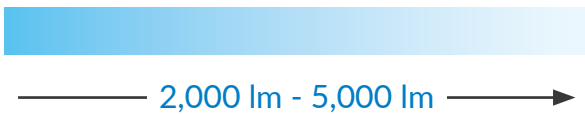
SHALLOW DEPTH DESIGN

When space is at a premium, the VTK-Controls Ready Troffer Retrofit Kit is your go-to solution. With an incredibly shallow depth of just 2.1 inches, this retrofit kit is designed to fit effortlessly into virtually any recessed application. No need to worry about tight ceilings or limited installation space—the VTK-Controls Ready ensures a perfect fit every time. When you need a retrofit that’s as versatile as it is compact, the VTK-Controls Ready delivers unmatched performance in even the most challenging spaces.

SIZE	VTK 1x4	VTK 2x2	VTK 2x4
DEPTH	2.9"	2.1"	2.1"

LUMEN AND CCT SELECTABILITY

Lumen and CCT selectability: The VTK-Controls Ready Troffer Retrofit Kit isn't just about fitting into tight spaces—it's also about delivering the perfect lighting for your application. With lumen and CCT selectability, you can customize the light output and color temperature to meet the unique needs of any space. Whether you require bright, cool lighting for a workspace or a warmer, more inviting atmosphere, the VTK-Controls Ready gives you the flexibility to choose.



2,000 lm - 5,000 lm



2700K - 5000K

