

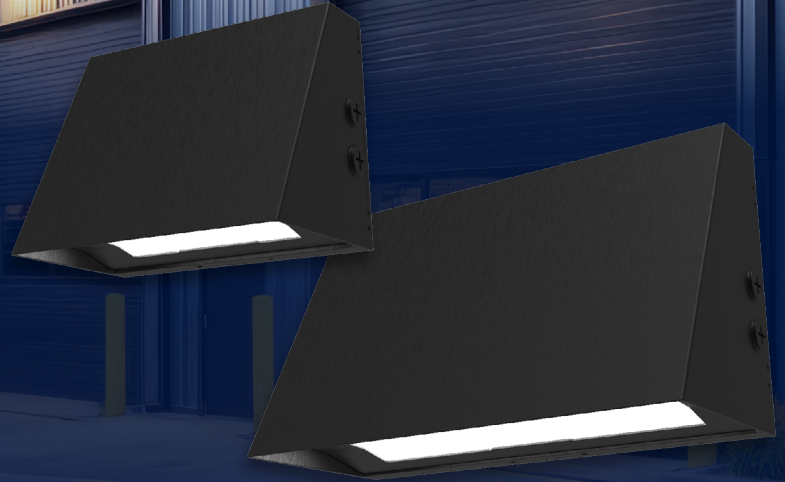


viewpoint

WALL PACK 2.0

DISTRIBUTION SELECTIVITY FOR PRECISION LIGHTING AND PHOTOMETRIC CONTROL

The Viewpoint Wall Pack offers a minimalistic and clean aesthetic with industry leading technology advancements. With its slim wedge design, the Viewpoint Wall Pack packs a punch of illumination while remaining discrete and cost-effective. IES Distribution, Lumen, & CCT selectable, the Viewpoint Wall Pack luminaire offers a versatile, attractive and economical solution all while belonging to one cohesive product family for a cohesive site.



- Provides uniform, full-cutoff illumination with electronic distribution selectable Type 2, Type 3, and Type 4 IES types to enhance site visibility while minimizing light pollution.
- Offers flexible customization with CCT and lumen selectable options, accommodating various lighting needs in a single fixture.
- Built-in Electronic photocell provides dusk to dawn illumination. Delivers reliable performance in harsh environments with IP65-rated, die-cast aluminum construction and a durable powder coat finish.



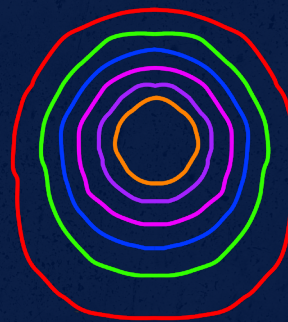
Integrated electronic photocell allows for dusk to dawn operation standard

DISTRIBUTION SELECTABILITY

The Viewpoint Wallpack 2.0 is designed to deliver targeted, efficient lighting. Its full cut-off profile eliminates uplight, helping protect night skies and reduce visual glare. A simple selector switch lets you choose among IES Type II, III, or IV distributions instantly, streamlining setup and product lead times.



Type II



Type III



Type IV



viewpoint

WALL PACK 2.0



TECHNICAL SPECIFICATIONS

- Architectural Wedge die-cast aluminum housing
- Bronze polyester powder coat finish (std.)
- Custom and factory select colors available
- Full Cutoff selectable Type 2, Type 3, and Type 4 distributions
- 3,000 - 14,000 Delivered Lumens with up to 148 LPW
- 3000K, 4000K & 5000K CCT Selectable via Integral selector
- Lumen Selectable - 3 lumen levels per SKU
- 0-10V Dim to off Driver with 12V Auxiliary for plug and play controls
- 4kV Surge Protection with optional 10kV & 20kV
- >80 Color Rendering Index (CRI)
- Calculated L70 >100,000 hrs @ 25°C per TM-21-19
- Operating Ambient Temperature: -40°C to +40°C (-40°F to 104°F)
- Bluetooth Programmable PIR Occupancy, Photocell, Grouping, Scheduling, & Bi-Level Dimming Sensors Available
- Battery backup & cold weather battery options available



NUROAir Plug n Play Bluetooth Groupable Sensor



NUROAir CONTROLS

NUROAir Plug n Play Bluetooth Sensor is the ultimate groupable lighting control solution. With motion sensing, occupancy and vacancy detection, and photocell capabilities, it delivers unmatched flexibility to optimize ambiance and energy efficiency. The NUROAir App for iOS and Android makes setup simple so you can customize light levels, schedules, zones, and more directly from your phone or tablet. Manual control is also available with compatible wireless and wired wall switches.



POWERED BY ILLUMUS. BRANDS

LUMEN & CCT SELECTABLE

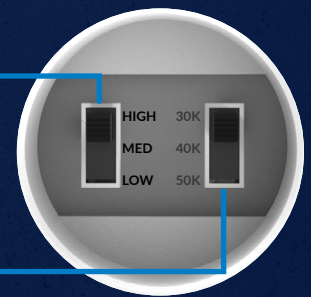
The Viewpoint Wall Pack remains sleek yet versatile with the integral CCT and Lumen selectability. Ranging from 3,000 to 14,000 Lumens and CCTs from 3000K to 5000K, the Viewpoint Wall Pack is suited to fit any project needs.



Lumen Select Switch
VWS2: 3L/4L/5L
VWM2: 8L/11L/14L



CCT Select Switch
3000K/4000K/5000K



QUICK MOUNT BRACKET

The Viewpoint Wall Pack 2.0 features a quick-mount bracket that streamlines installation without the need to open the luminaire. An integrated bubble level ensures precise alignment, while the no-drill rear housing delivers superior ingress protection and maintains the fixture's IP65 integrity in tough environments. The clean design offers no visible hardware for a clean refined appearance.

